

Strosahl's Advent Calendar of Puzzles 2020

ScottStrosahl.com

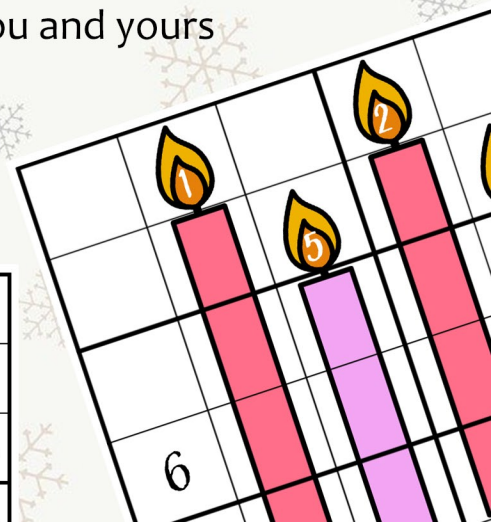
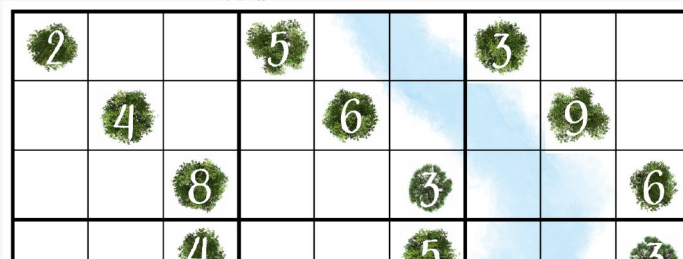
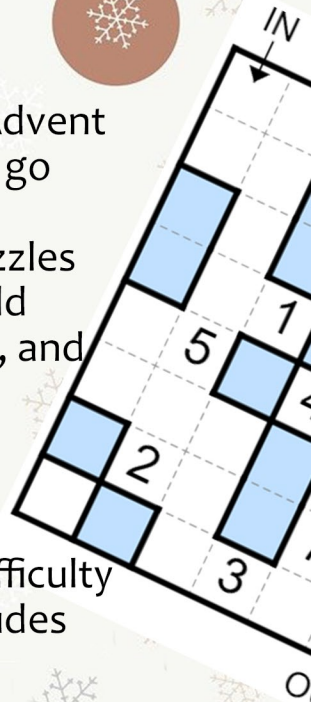
Prompted by a passing comment from someone that an 'Advent Calendar of Puzzles' would be an interesting idea, I decided to go for it and make a Christmas-themed puzzle for every day in December leading up to Christmas 2020. While testing the puzzles with my family, I realized that a junior, or 'family', version would be great for kids (like my 8 and 11-year-olds that enjoy sudoku), and those who are new to sudoku. Included within are all of the puzzles posted as part of the 2020 Advent Calendar, plus a bonus Thanksgiving puzzle.

There are a number of puzzle variants included, and the difficulty roughly increases throughout each week. Each page also includes links to an online version, if you prefer to solve that way.

For more information on the rules and tips, check out the series of videos I did at <https://rebrand.ly/Advent-Videos>

I truly hope you enjoy these puzzles, and wish you and yours the Merriest of Christmases.

- Scott



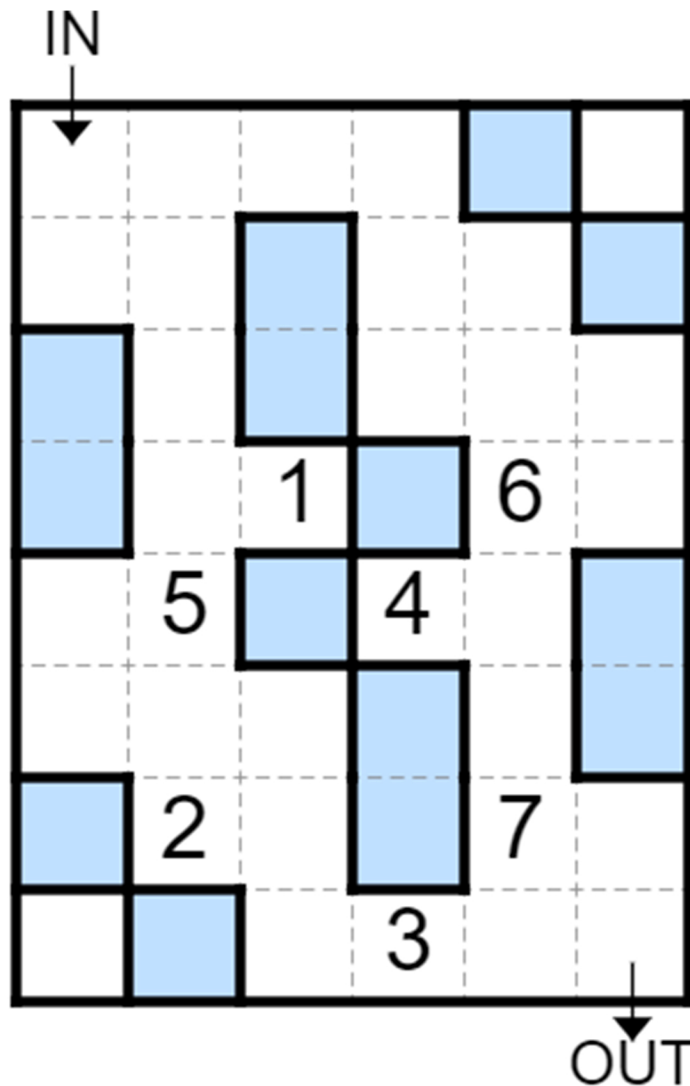
<https://rebrand.ly/3Kings>

“Following yonder star”

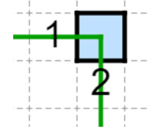
Santa's Roadmap

<https://rebrand.ly/Roadmap-family>

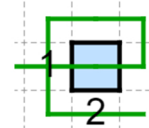
Help Santa plan his route through town by drawing a path through the centers of cells from the 'IN' to the 'OUT'
 The path must pass through each numbered house in order
 Santa's sleigh cannot turn on ice (blue regions)
 He must visit every blue region at **least** once
 He can only visit a white cell at **most** once



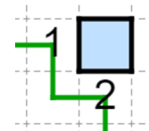
EXAMPLES



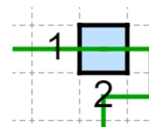
Not allowed
 Path can't turn on ice (blue)



Not allowed
 Path can't visit a white cell twice (cross itself in the white)



Not allowed
 Path must visit each blue region



Okay!

"Merry Christmas to all, and to all a good night!"

Christmas Cookies

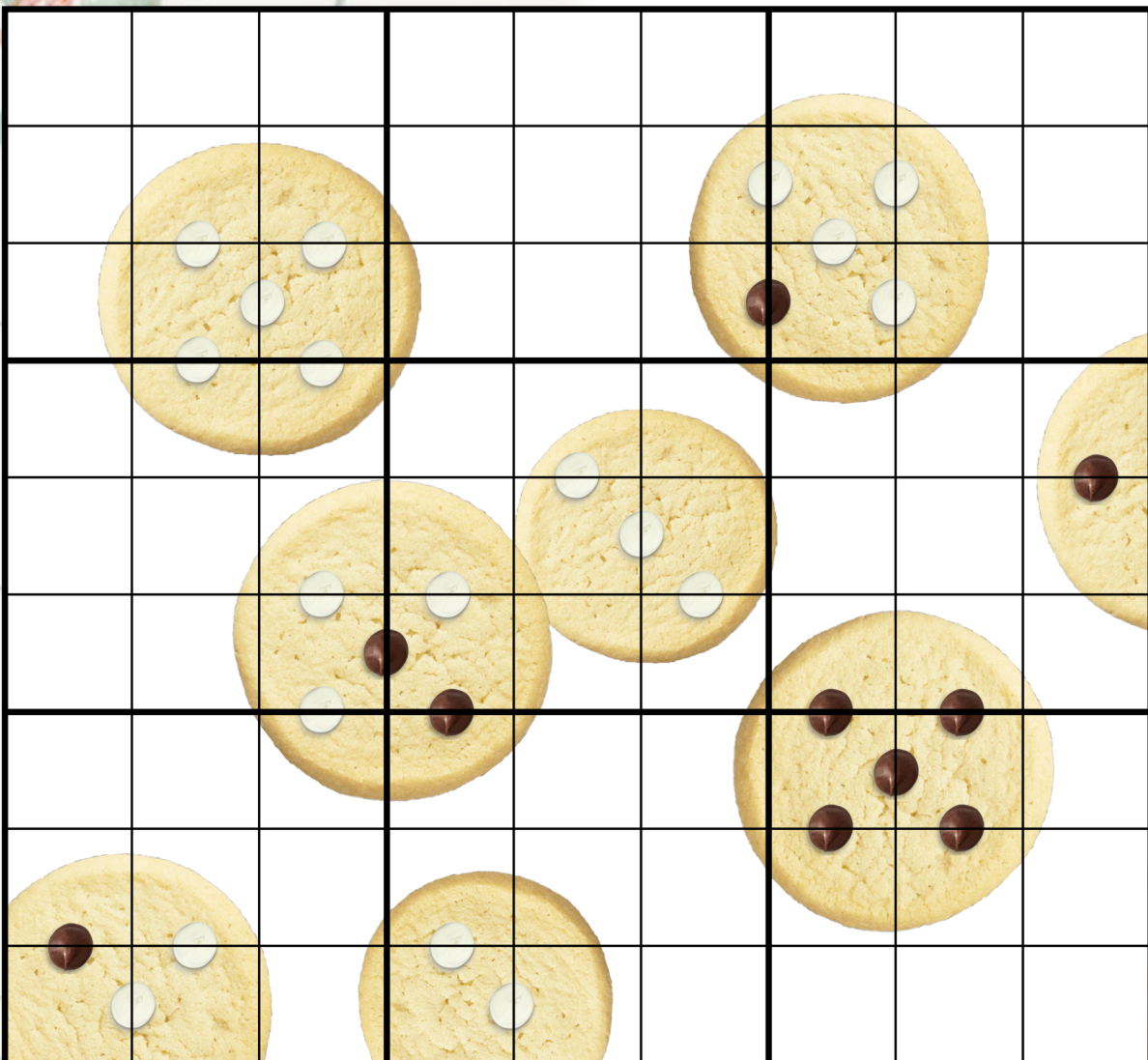
<https://rebrand.ly/XmasCookies>

Place the digits 1-9 in each row/column/box

A white chocolate chip between 2 cells indicates a difference of 1

A black chocolate chip between 2 cells indicates a ratio of 2

Not all possible chocolate chips are given



“Don’t forget the milk”

By the Chimney with Care

<https://rebrand.ly/ByTheChimney-family>

Place the digits 1-6 in each row, column, and box
The fireplace (4 cells) must be cloned somewhere else
in the grid (the location of which must be determined).

			1		
			3		
			5		
	2	5	6	3	
	4			6	
	6			1	

“in hopes that St. Nicholas soon would be there”