

# Getting Ready for Your Blue Light Cystoscopy with Cysview®

Patient Name: \_\_\_\_\_

Healthcare Provider Contact Information

Date/Time of Procedure: \_\_\_\_\_ @ \_\_\_\_\_ AM/PM

Location: \_\_\_\_\_



Arrival Time: \_\_\_\_\_

## Description of procedure

1



It is **essential for you to arrive early for your procedure**. Your arrival time is critical for its success. One hour before the procedure, you will receive an optical imaging agent called Cysview to prepare your bladder.

2



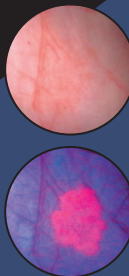
A small amount (2 oz) of **Cysview will be placed into your bladder through a catheter**. You will be asked to hold it in your bladder for as long as you can during the hour before your procedure.

3



During the Blue Light Cystoscopy with Cysview procedure, your healthcare professional **will look into your bladder through a cystoscope using white light then blue light**.

4



A cystoscopy helps healthcare professionals see possible tumors, and **Cysview helps this process by making the tumor cells illuminate pink under blue light**, used in addition to the usual white light. Your healthcare professional can then assess your bladder health and determine the most appropriate next steps in your care.

## Preparing for your cystoscopy

Your procedure will be performed in the: \_\_\_\_\_ hospital \_\_\_\_\_ clinic

Patient Instructions: \_\_\_\_\_

\_\_\_\_\_



Be sure to follow any instructions noted above and any directions from your healthcare professional about the medications and supplements you take.

# After the procedure



You may experience:

- Bladder spasms
- Trouble urinating
- Discomfort when urinating
- Frequent urination
- Blood in your urine
- Bladder pain



Follow your discharge instructions carefully.



Be sure to contact your physician's office with any issues or concerns.



It's a good idea to drink plenty of fluids after any cystoscopy.

To learn more, go to **Cysview.com**

Want to speak with a patient like you?  
Email **Cysview.Patient.Programs@Photocure.com**  
or call **(609) 285-4115**

## Important Risk & Safety Information

Cysview® (hexaminolevulinate HCl) is an optical imaging agent used to detect non-muscle invasive bladder cancer in patients suspected or known to have lesion(s) on the basis of a prior cystoscopy, or in patients undergoing surveillance cystoscopy for bladder cancer. Cysview is not a replacement for random bladder biopsies or other procedures used in the detection of bladder cancer.

Anaphylactoid shock, hypersensitivity reactions, bladder pain, bladder inflammation (cystitis), and abnormal urine tests have been reported after administration of Cysview. The most common adverse reactions seen in clinical trials were bladder spasm, trouble urinating, discomfort when urinating, frequent urination, blood in the urine, and bladder pain.

Cysview should not be used in patients with large amounts of blood in their urine, any known allergy to Cysview or any derivative of aminolevulinic acid, or porphyria, a condition that means you already have high levels of porphyrins in your body. No specific drug interaction studies have been performed.

© 2023 Photocure Canada Inc. All rights reserved.  
Cysview and BLC are registered trademarks of Photocure ASA.  
April 2023 CYSC20230009-S

**CYSVIEW®**  
Hexaminolevulinate HCl



THE  
BLADDER CANCER  
COMPANY