



Vocational College & Outdoor Centre

Prospectus 2018-19

Index

3	Welcome to Petty Pool
4	About us / Our learners
5	Our success
7	Vision and values
9	Study programme / Learner Voice
11	Enrolment / Student lifecycle
12	Work Based Learning
14-15	Petty Pool life
16	Course index
17	Employability
18	Supported Internships
19	Hospitality & Catering
20	Animal Care
21	Horticulture & Conservation
22	Retail, Office & IT
23	Hotel, Tourism & Customer Service
24	Preparation for Independence
25	Preparation for Work
26	Tutorial
27	Life Skills
28	Enrichment
29	Functional Skills
30-31	Outdoor Education Centre

Welcome to Petty Pool

Based in Sandiway Cheshire, Petty Pool is a charity set up in May 1981, with operational activities divided between Petty Pool Vocational College, which provides education and training for young people with learning disabilities, and Petty Pool Outdoor Centre, providing personal development through adventurous activities.



"I am so privileged to work at Petty Pool, a place which continues to inspire everyone involved, as it has done for the past 35 years.

Two words sum up what we are about and what we strive daily to achieve: 'Happy Learners'. Our aim is to educate, train and support young people, either via our excellent Vocational College which supports students with learning disabilities to prepare for their adult life, or in our Outdoor Centre, which supports the personal development of all young people.

At the heart of Petty Pool's success is the on-going involvement of young people in everything we do, as well as our commitment to working in partnership with stakeholders. All involved work tirelessly to support our young people.

Most of all, Petty Pool's success is about the excellent staff and volunteers who work diligently with passion, commitment and a huge array of skills to deliver a service which is simply extraordinary."

A handwritten signature in black ink that reads "Jayne Wilson".

Jayne Wilson, Chief Executive



About the College

Petty Pool Vocational College is an education provider for young adults with learning difficulties, supporting up to 100 full-time students from across Cheshire, Halton, Warrington and the North West.

Located in the heart of Cheshire, and set in 40 acres of woodland in Sandiway, near Northwich, Petty Pool Vocational College aims to provide every learner with an effective and enjoyable educational experience that empowers them to reach their full potential.



Our learners

All applicants must have an Education Health Care Plan or equivalent. We accommodate learners with a range of learning difficulties and disabilities, including moderate/severe learning disabilities, specific learning disabilities, physical disabilities, communication needs, Autistic Spectrum conditions, Epilepsy, Downs Syndrome, Williams Syndrome and Fragile X.

This list is not prescriptive or exhaustive and each individual learner's condition is assessed at preliminary interview, allowing the college to develop an individualised learning and support plan for each learner if the college believes that Petty Pool is the right progression opportunity for them. We focus on what young people can do and not what they cannot.

"At the heart of Petty Pool's success lies imaginatively delivered, highly personalised and effective information, advice & guidance (IAG) that is making a positive and lasting difference to the lives and life chances of the students."

Matrix Assessment / Matrix Assessment Report, March 2017

Our success

Petty Pool's success comes from the on-going involvement of young people in everything we do; Our commitment to collaboration with parents and partners; our unique combination of support and empowerment of students, and our combination of a nationally driven educational framework and policy, with high quality bespoke delivery.

Our achievements and continued growth are thanks to the excellent staff and volunteers who work with extraordinary passion, skills and talent to positively support our students.



99%

Gained their core qualification

85%

Moved into positive outcomes
(Including 75% into employment related activities, of which 32% was paid employment)

91%

Success in Functional Skills qualifications

"The reasons why I like Petty Pool are: that the staff and the learner mentors are kind and friendly. They've helped me get an amazing job at Atkins and I am busy working there 2 days a week. This is my final year at Petty Pool and I am in the supported internship class. I like everything about it. "

Taylor Hughes



Our vision & values

Our vision is '**achieving excellence**'.

At Petty Pool, students feel that their views and experiences are encouraged, valued, respected, and most importantly, acted upon to shape services that meet their needs. We strive to empower our students and ensure the skills they acquire can be used in all elements of their lives.

Petty Pool Vocational College considers the following to be essential elements of effective provision:

- A calm, supportive and welcoming learning environment
- Appreciating all stakeholders and their unique contribution to our success
- High quality teaching and a curriculum designed to accommodate and respond to

the ever-changing needs of the individual

- Striving to continuously develop and improve what we do
- A holistic approach where all aspects of personal development are addressed, be they academic, vocational, social or emotional
- An emphasis on the continuity of learning and the transference of skills acquired to the home and other areas of students' lives
- A commitment to ensure the health, wellbeing, safety, security, enjoyment and happiness of all students, and to work in partnership with other professionals to facilitate this where necessary
- A culture that promotes independence, equality, inclusion, the rights of the individual and respect for all



"An individualised, holistic approach to personal development is key to learners' path to success; We ask learners what their hopes and aspirations for the future are and support them to realise these, facilitating their chosen route and reducing barriers. Social, emotional and behavioural development complements outstanding vocational training, work experience and a multitude of opportunities above and beyond the curriculum.

"Our primary objective of education into employment and associated ethos of individual empowerment instils into every learner a strong work ethic which takes young people from passive recipients of services into active contributors to the workforce, their local communities and wider society. It is so gratifying to witness individuals of all abilities learn that they can and will hold down a job."

Nicola Colenso - Director of Student Services

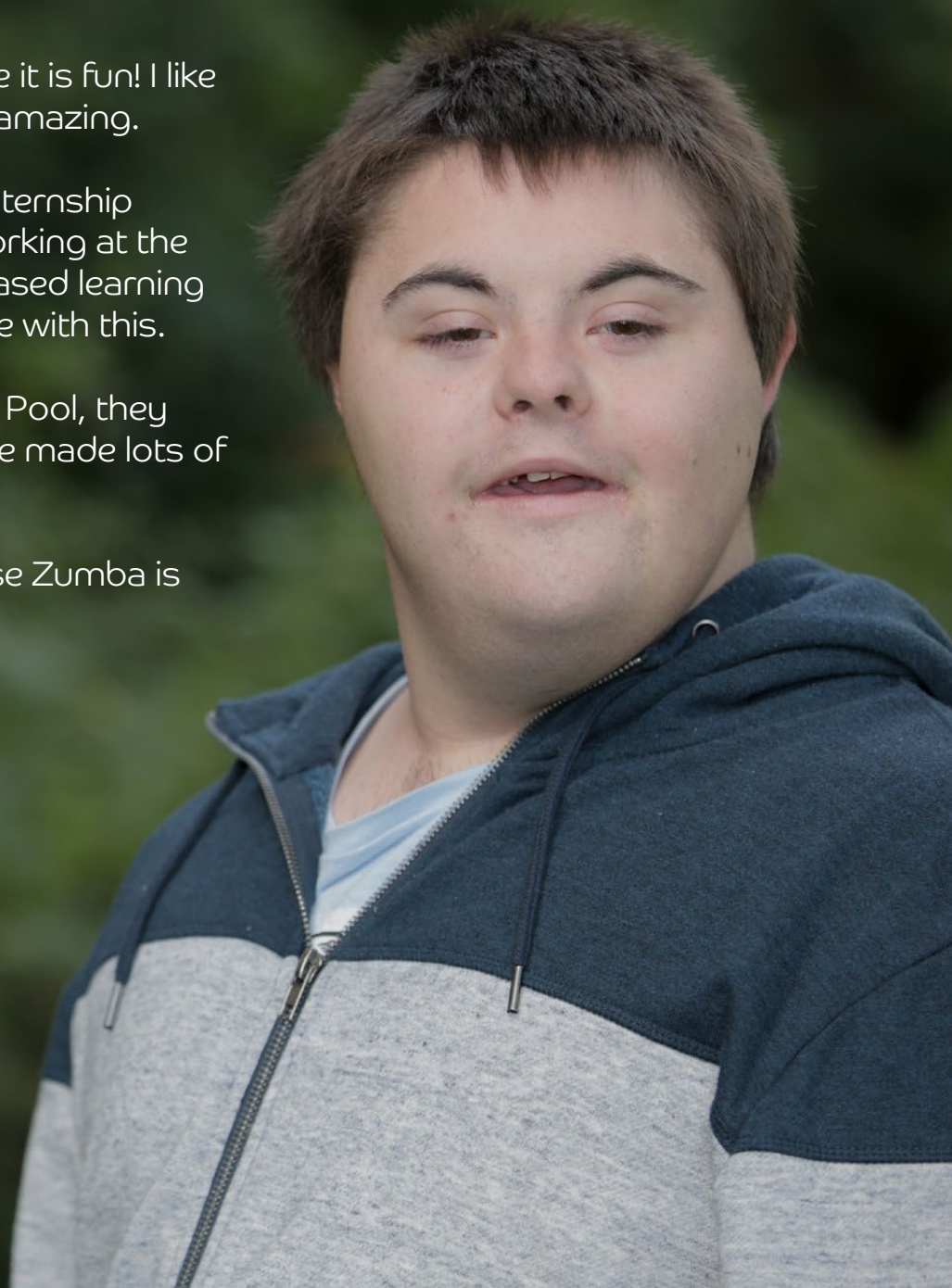
"I like Petty Pool because it is fun! I like everything about it, it is amazing.

I am on the supported internship programme and I am working at the Premier Inn. The work based learning team have supported me with this.

I like all the staff at Petty Pool, they help me with stuff. I have made lots of friends at Petty Pool.

I love enrichment because Zumba is great fun!!!!"

Sam Bridge, Student



Study Programme

All students must have an EHCP on entry. Following a two-week induction, all students are profiled to their individual study programmes. Students can continue to the maximum of three years if they are continuing to show incremental progression. This is subject to a panel process and agreed by your LA.

Study programmes are made up of four key elements...

1. CORE AIM – We ask students to pick a key subject that is of interest to them.

2. ENGLISH & MATHS – These compulsory subjects are covered in Functional Skills.

3. WORK EXPERIENCE – Work experience linked to your chosen subject area.

4. NON QUALIFICATION ACTIVITY – These can be in the form of Life Skills, Enrichment, Tutorials or residential holidays.

Learner Voice

We recognise and value the importance of the voice of the students. To facilitate this, we create opportunities for young people to play meaningful roles at an operational level, thereby making young people an integral part of decisions and governance arrangements.

Learner rights and autonomy are actively championed at Petty Pool. At the heart of this is our student council, which consists of two reps from each class who are elected by their peers.

A focus on developing a strong learner voice through the student council and monthly learner forums are key in preparing learners for life after college.





Enrolment

Petty Pool Vocational College invites anyone to attend its Open Day For Learners and Parents. We hold two open days each academic year, one in the Autumn term (Nov) and the other in the Summer term (June).

Open Days include guided tours of all our facilities, an overview of courses, a chance to meet current tutors and students, and a relaxed, informal environment in which to find out about services and opportunities available.

The enrolment process begins on the 1st September of each academic year.

We accept referrals from young people's advisors, special schools or young people can self-refer.

Once we have received your application, you will be invited to Petty Pool for an initial interview. Following your interview, you may be offered a two-day link visit during which we will assess your vocational and functional skills. Assessment decisions are made using the information gathered during this process.

If you are interested in enrolling as a student or on behalf of a prospective student, then please contact the college for more details.

Student lifecycle

1. PRE ENTRY – Visit Petty Pool on one of our open days, have a formal interview, take part in the assessment process then offer decision is made.

2. ON ENTRY – New students are given a warm welcome. Two day induction for new starters followed by a two week rolling timetable where students sample key areas then select a course.

3. ON COURSE – All students are enrolled on a 16-19 study programme. All students have Individual Learning Plans which include short and long-term SMART targets.

4. ON EXIT – All learners exit into positive destinations, be that paid employment, voluntary work or employment focussed/ community-based payable services.

Work Based Learning

Petty Pool Vocational College is committed to optimising the skills and confidence our students need to gain meaningful employment when they leave.

We recognise that work experience is a key component of the Study Programme, helping students to develop the core skills, qualifications and experience needed to prepare them for a fulfilling life in the workplace.

We have strong links with local employers, with whom we work closely to ensure that work experience is beneficial and rewarding for both students and employers.

Employers are supported in all aspects of providing the placement, and in some cases, making the transition to offering students permanent employment.

What we're looking for:

- Entry-level employment roles
- Training opportunities
- Volunteering opportunities

For more information, please contact our Work Based Learning manager, Linda Walker, to find out more about the opportunities available.



"Petty Pool is a brilliant college. It is really good and you get to choose from lots of really good courses. The staff are nice and friendly.

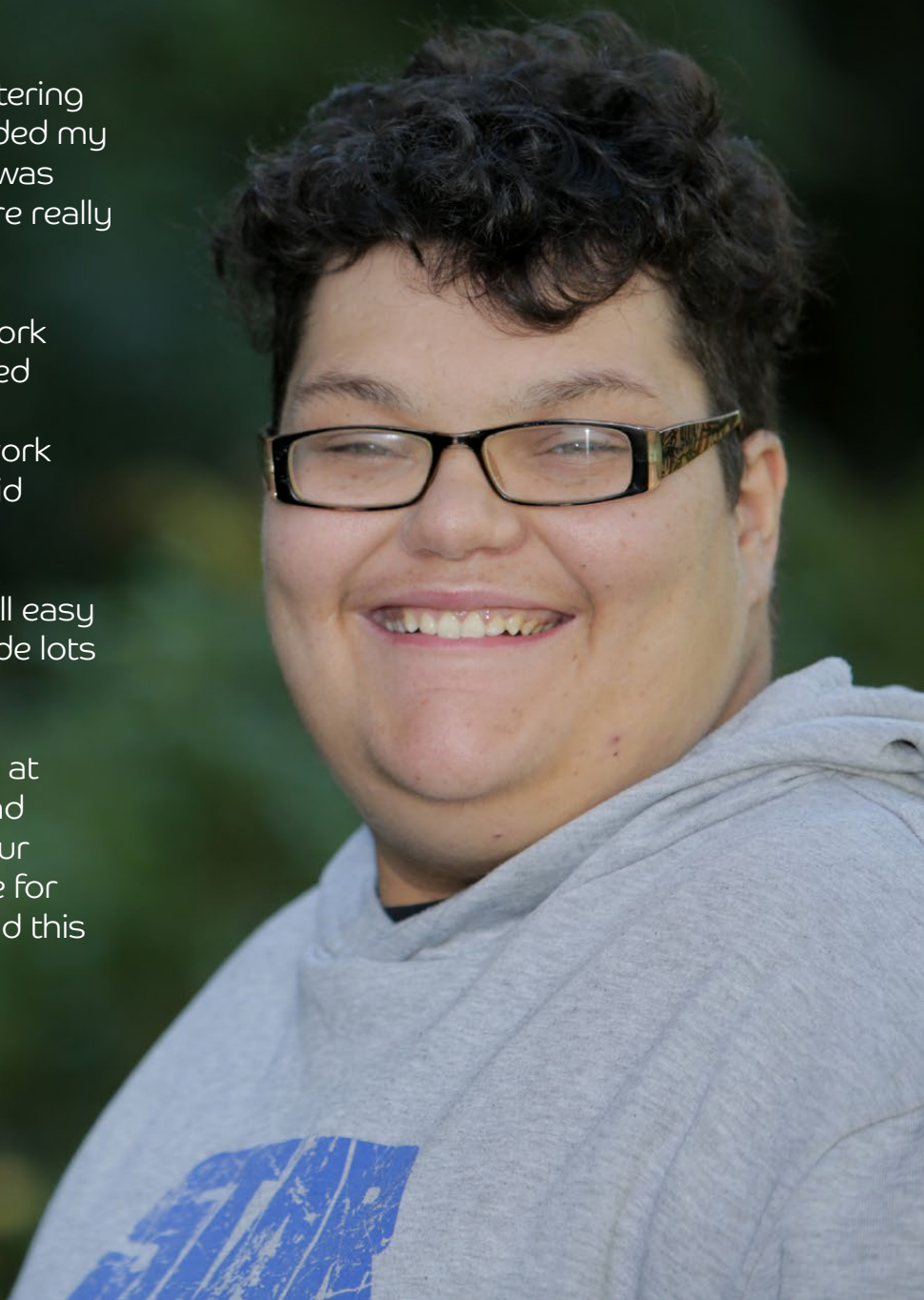
I have previously been on the catering course for 2 years and this included my level one. I really enjoyed this. It was stressful at times but the staff are really supportive.

You get the opportunity to do work experiences. I am in the supported internship group, the staff have supported me to get a regular work placement with the hope of a paid outcome at the end of it.

The students at Petty Pool are all easy to get a long with and I have made lots of friends.

I enjoy the overnight residentials at Petty Pool, they are good fun and it is a great chance to be with your mates. This is a good experience for students who might not have had this opportunity before."

Charlotte Street, Student



Petty Pool life

Residentials

All Petty Pool students are given the opportunity to get involved in residential trips to further develop core skills in a range of different environments. We organise residentials which include trips to London by train, visits to Ribby Hall Village, Haven Holidays camps and our annual Turkey and Tinsel event in Lytham.

We also provide on-site 'baseline' residentials for all students at the beginning of the year. This enables us to establish baseline skills and capabilities, such as making the bed, packing, on-site safety awareness etc, which we then use to develop targets for the coming year.



Day trips

Students participate in a range of fun and accessible day trips throughout the year to further develop their independent living skills outside of the college environment. From shopping trips to the local supermarket and pantomimes at Warrington and Vale Royal College, to Christmas carol singing – each provides ample opportunity to practice the core social and independent living skills they need to take them forward into adulthood.

On-site events

At Petty Pool, we're lucky enough to be surrounded by 40 acres of gorgeous Cheshire countryside, as well as our state of the art Outdoor Centre. Throughout the year, students enjoy many outdoor pursuits, including bushcraft, zip wire and archery – enabling them to enjoy the great outdoors in a safe, nurturing environment.

Special events include an annual ice rink installed in the grounds during the Christmas term, and our annual Halloween party. We've even hosted a Summer music festival in our grounds, at the request of our students – something we plan to repeat in coming years.



Student prom

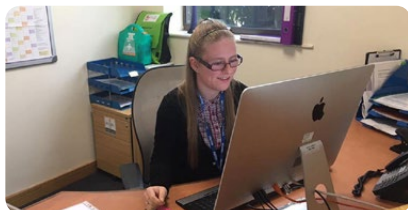
Without a doubt, the highlight of our social calendar at Petty Pool is the annual student prom. This special event is held in July to recognise the achievements of students who are leaving the college, but is open to all students and parents / carers who wants to attend. It's a great opportunity to get dressed up, jump in a limo, dance all night, and most importantly, celebrate our leavers' many achievements. The night includes a presentation to each Petty Pool graduate – and a moment to shine a spotlight on the stars of the show – our students.



Courses at Petty Pool



Employability



Supported Internships



Hospitality & Catering



Animal Care



Horticulture & Conservation



Retail, Office & IT



Hotel, Tourism & Customer Service



Preparation for Work



Preparation for Independence



Functional Skills



Tutorial



Life Skills



Employability

This is our dedicated transition year, where all final year students develop their work skills and are supported in undertaking individual work placements with the aim of gaining paid employment.

Working alongside our Work Based Learning Team, students are supported in placements which, where possible, relate directly to the vocational pathway they have studied. A job coach works alongside students until they feel confident to work alone with the supervision of co-workers.

To ensure that work is sustainable, we train students to travel independently. Some of this

year's placements include No More Kennels, Toast, Bentley Motors and Macclesfield Town Football Club. The Employability qualification includes the vital understanding to back up these practical work skills, including teamwork, applying for jobs, interview skills, personal presentation and work / life balance.

All students, whatever vocational pathway they take, will have individualised Functional Skills sessions (Maths & English) and undertake qualifications whenever possible. They also have weekly Life Skills sessions to develop independence and enrichment, where they choose from a range of leisure clubs.

Qualifications:

City & Guilds (5546) Award & Certificate in Employability Skills Entry Level 2

OCNWM Award, Certificate & Diploma in Employability & Development Skills Entry Level 3 and Level 1



Supported Internships

The year-long programme is designed to support students with learning difficulties who wish to gain paid employment, but require some additional support to do so. The intention is that students spend the majority of their time in the workplace, accessing college to develop Functional Skills and specific workplace qualifications if appropriate.

Currently we are offering the programme to students who have completed at least one academic year in a vocational area at Petty Pool. The Petty Pool model of internships offers a programme where students work in their chosen vocational area.

Initially, interns attend college for two days a week and take a placement for the remaining two. The aim is that the work placement increases to three days a week in the second and third terms. Interns are supported by job coaches until they are more confident to work alongside their colleagues. They are also travel-trained to ensure the sustainability of the job. Ultimately, the goal is paid employment in the placement companies.

All students, whatever vocational pathway they take, will have individualised Functional Skills sessions (Maths & English) and undertake qualifications whenever possible.



Hospitality & Catering

In Hospitality & Catering students learn the skills to work both front of house serving customers, as well as in the kitchen helping to prepare food. They also develop valuable IT and housekeeping skills.

The group is responsible for the day to day running of our catering facilities, providing breakfast and lunch for all of our students and staff, plus visitors to the Outdoor Centre. Students learn a wide range of skills, from vegetable preparation, baking, cleaning and till use. They also organise special catering events to mark occasions such as Valentine's Day and Chinese New Year.

Students are offered further opportunities to learn

valuable skills needed to work in the hotel industry through Petty Pool's own Outdoor Activity Centre, which hosts overnight residential visits for guests.

Students help service the chalets and communal areas. We have recently started an exciting new project with Premier Inn, having a mock-up hotel room on site, where students can learn standardised housekeeping skills before working in local hotels.

As part of the study programme, all learners undertake work placements. This year, students are working at The Bluecap and Abbeywood Estate Café, serving customers, preparing drinks and more.

Qualifications:

City & Guilds Award / Certificate in Skills for Working Life Entry Level 3

OCNWM Award, Certificate & Diploma in Employability & Development Skills Level 1



Animal Care

Students on this course look after the livestock, poultry and small animals in the college animal care units. Students are responsible for the feeding, watering and mucking-out of all the animals.

The small animal care unit houses guinea pigs, rabbits, gerbils, cockatiels, budgies and more. In the poultry unit, students look after a range of rare breed chickens, some of which we have hatched and reared at Petty Pool. The eggs that our chickens produce are used in Independent Living sessions. We also have a goat farm, where the animals are bred from birth each year and sold at market.

Our most recent additions to the farm are two miniature Shetland ponies.

As part of the study programme, all learners undertake work placements. The Animal Care group works at Tatton Park Farm, Paw Pad Doggy Day Care & Grooming and Sandy Lane Equestrian Centre. In addition to this, students have worked with the RSPCA to help release foxes into the wild, and a range of projects with the Forestry Commission.

Qualifications:

City & Guilds Award / Certificate in Skills for Working Life Entry Level 2

City & Guilds Award / Certificate in Skills for Working Life Entry Level 3

City and Guilds Certificate in Land Based Skills Level 1



Horticulture & Conservation

On this course, students work on a combination of Horticulture and Conservation units. Students run a 60ft greenhouse, large vegetable patch and help maintain our woodlands at Petty Pool.

As part of the course, learners develop skills in sowing seeds, filling containers, planting trees, and much more. The group is responsible for running Petty Pool Plant Sale, a pop-up garden centre open to the public which sells plants that they have grown and cared for. They also help maintain the college grounds. In Conservation, students work in our 40 acres of woodland, maintaining paths and planting trees. We also have a tree nursery which is growing trees from sapling, ready for planting. As part of the Study Programme, all learners

undertake work placements. The Horticulture & Conservation group work daily with Petty Pool's own social enterprise, MORE Maintenance. Alongside a job coach, learners develop their skills in the community, looking after local gardens. The project also maintains the award-winning train station grounds at Delamere.

All students, whatever vocational pathway they take, will have individualised Functional Skill sessions (Maths & English) and undertake qualifications whenever possible. They also have weekly life skills sessions to develop Independence and Enrichment, where they choose from a range of leisure clubs.

Qualifications:

City & Guilds Award / Certificate in Skills for Working Life Entry Level 2

City & Guilds Award / Certificate in Skills for Working Life Entry Level 3

City and Guilds Certificate in Land Based Skills Level 1



Retail, Office & IT

Students on this course develop skills that will help them to find work in retail and office environments.

As part of the course, the students run the college shop, selling a variety of products such as snacks, our own branded sweatshirts and t-shirts, and personal care products. Students visit wholesalers to purchase stock, which they are in charge of storing and displaying in the shop.

They serve customers and need to keep the shop clean, tidy and safe. As part of the IT aspect of the course, students learn how to set up and use standard PCs and their programs.

They also support college administration completing tasks, such as photocopying and completing mail-shots.

As part of the study programme, all learners undertake work placements. The Retail, Office & IT group works at Pro Gas, helping with a range of office tasks. They have recently started working at Tesco in Northwich, to develop their retail skills, including collecting online shopping orders, talking to customers and recycling waste from stock replenishment.

Qualifications:

OCNWM Award, Certificate & Diploma in Employability & Development Skills Entry Level 3 and Level 1



Hotel, Tourism & Customer Service

This new course started in September 2018, it is designed to support students in developing the practical and customer service skills to work in the Hotel and Tourism industries.

Students hoping to gain employment in jobs such as housekeeping, hotel reception and concierge, restaurant service, tourist information and any customer facing roles will develop the skills they need on this course. The service industry sector is a major source of employment in Cheshire with Petty Pool already having strong links with Premier Inn. A number of students have already been employed by the company and the college already had a bespoke Premier Inn Training Centre on site.

The course includes units such as Reception & filing skills, Providing information on a tourist destination, Guest services and Customer services in the hospitality industry, Personal presentation in the workplace and much more.

As part of the 16-19 study programme, all learners will undertake external work placements. This year students are working at Chester Visitor Information Centre, helping tourists visiting the city and restocking information leaflets. Students will also be engaging in our Premier Inn Housekeeping Programme wherever appropriate.

Qualifications:

OCNWM Award, Certificate & Diploma in Employability & Development Skills Entry Level 3 and Level 1



Preparation for Independence

Students on this course aim to develop a wide range of skills to enable them to be more independent at home and in the community. They also take part in projects that build skills for work.

The group works on independent living skills in our in-house flat, preparing drinks and meals, and helping to keep the area clean and tidy. We can also use the flat to follow personal care plans.

We access public transport to go shopping for cooking ingredients, and access local facilities such as Northwich Memorial Court, where we try out different areas of fitness.

All of the activities organised help students learn useful work skills, such as following instructions and wearing appropriate clothing.

As part of the Study Programme, all learners undertake work placements. They undertake taster sessions across the different vocational areas in college. The group also takes part in volunteering projects, such as litter picking and preparing for Christmas tree sales with the Forestry Commission and Saltscape.

Qualifications:

OCNWM Award, Certificate & Diploma in Living Independently Entry Level 1



Preparation for Work

This course is designed for those learners who have yet to decide which vocational area interests them, allowing for tasters in the different work environments, whilst continuing to develop their independent living skills.

As part of the course, students are encouraged to try out the different work areas we have available at Petty Pool. These include Animal Care, Horticulture, Conservation and Retail and Catering. Tasters happen both on and off-site throughout the year, helping students to gain a real insight into each industry, whilst developing

transferable work skills. Students also continue to develop their independence skills, both in the community, undertaking travel training, and domestically, in our own in-house flat.

As part of the study programme, all learners undertake work placements. The Preparation for Work group runs a weekly pop-up café in Sandiway Library, serving hot drinks and cakes made by the Hospitality & Catering students. Learners also have weekly visits working at Dairy House Farm, where they help care for the animals and help with conservation projects.

Qualifications:

OCNWM Certificate in Skills for Living and Work Entry Level 2



Tutorial

Our weekly Tutorial Programme for all learners is designed to meet the individual and varied needs of our students. It also aims to provide sessions that relate to equality & diversity issues, prevent & safeguarding initiatives, and the preparing for adulthood agenda of moving to employment, staying healthy, developing good relationships and independent living.

Student Voice

This is the tutor group's chance to develop advocacy skills, feedback thoughts on college, input on future planning and change, and discuss issues from current affairs. We also encourage students to share personal experiences, liaise with their student council representative and ask questions of the Senior Management Team.

1:1 Tutorials

Students have a weekly opportunity to talk 1:1 to their personal tutor to review progress and ILP targets, and to discuss any issues that may be affecting them.

Topical subject

These sessions encourage students to look at issues that affect them and the world around them, linked closely to national and international awareness events, Prevent and Safeguarding.



Life Skills

Students participate in weekly 'Get Up and Go' sessions. These are tailored to each individual, in response to their initial Baseline Residentials which take place at the start of the academic year. This is our opportunity to assess each student's baseline life skills, from which learners are supported to set their own targets for the year.

Targets could include:

- Catching the bus into Northwich
- Putting clean bedding on the bed
- Making a packed lunch
- Washing their own hair
- Booking a dental appointment



Enrichment

Every Thursday afternoon, all students take part in a weekly Enrichment session, an opportunity for students to try different activities which they can also access in their leisure time. Students choose a different club to join each term.

Here are some of the enrichment activities we offer:

- Floristry
- Make Do & Mend
- My Little Pony club
- Swimming
- Football
- Around the world
- Digital photography
- Pamper group
- Zumba
- Movie Making
- Hike with Mike
- Dance & Drama





Functional Skills

On entry to the college, we assess each student's levels of Functional Skills, before developing a bespoke learning package. Students then work on specific areas for development, taking an appropriate level qualification in English and Maths at the end of the year.

Functional Skills are practical skills in English, Maths for all learners. Functional Skills provide students with essential knowledge, skills and understanding that will enable them to operate confidently, effectively and independently in life and work.

Functional Skills are timetabled weekly in specialist groups derived from the outcomes of diagnostic testing. They are also embedded throughout all other teaching, learning and assessment activities within the study programme.

Our approach to teaching Functional Skills and employability is holistic. Targets are worked on in lessons, during break times, off-site visits and within the workplace, enabling students to learn organically.

Petty Pool Outdoor Education Centre

School residentials

Set in 40 acres of Cheshire woodland, Petty Pool Outdoor Centre provides safe activity programmes for day or residential visits. This includes tailored activities which complement the school curriculum to support learning frameworks.

We accommodate groups of up to 32 people and provide bespoke programmes of activity designed to suit your needs. All activities are risk assessed and updated on a regular basis.



Organised groups

We host varied day or residential programmes for schools, colleges and community groups, creating bespoke packages tailored to accommodate your group's interests and abilities.

Our programmes are flexible and can be developed to suit a wide range of abilities and needs. We also provide a choice of in-house catering services, enabling groups to choose their own menus, including guests with special dietary requirements.

We are proud to be accredited by:



Corporate hire

Providing the perfect setting for team-building and corporate away days, Petty Pool Outdoor Centre offers an unrivalled range of adventurous activities in a safe and supportive environment. Be it high-level activities such as the Zip Wire and Climbing Wall, or ground-level action such as Bushcraft or archery, our highly trained Outdoor Centre team will work with your organisation to deliver the perfect programme to help you meet your aims and objectives – regardless of age or ability level.

- ✓ All staff fully trained
- ✓ All equipment safety checked
- ✓ High and low level activities
- ✓ All activities risk-assessed
- ✓ On-site accommodation
- ✓ First aid-trained staff
- ✓ 24hr Duty Officer
- ✓ Canteen, lounge and games room
- ✓ Wheelchair accessible site

Please contact the centre to discuss your requirements. Every group requires a slightly different activity programme, our activities are fully accessible to participants of all physical and cognitive abilities.

For more information or booking enquiries, please contact the centre on 01606 889097 or visit us online: www.pettypool.org.uk





Pool Lane
Sandiway
Cheshire
CW8 2DR

Tel: 01606 889097
www.pettypool.org.uk