



## First A Fence



### 2014 HORIZON PC60 SKYLounge

**LOA:** 60' 9" (18.52m)  
**Beam:** 24' 6" (7.47m)  
**Min Draft:** 4' 8" (1.42m)  
**Max Draft:** 4' 10" (1.47m)  
**Speed:** Cruising 20 Knots (23 MPH)  
Max 22 Knots (25 MPH)

**Delivery/Model Year:** 2014  
**Builder:** HORIZON  
**Type:** Catamaran  
**Price:** \$2,495,000 USD  
**Location:** FT LAUDERDALE, Florida  
United States

### Additional Specifications For First A Fence:

<b>LOA:</b>	60' 9" (18.52m)	<b>Delivery/Model</b>	2014
<b>Beam:</b>	24' 6" (7.47m)	<b>Year:</b>	
<b>Min Draft:</b>	4' 8" (1.42m)	<b>Year Built:</b>	2013
<b>Max Draft:</b>	4' 10" (1.47m)	<b>Builder:</b>	HORIZON
<b>Hull Material:</b>	Composite Fiberglass	<b>Model:</b>	PC60 SKYLOUNGE
<b>Hull Config:</b>	Catamaran	<b>Type:</b>	Catamaran
<b>Hull Designer:</b>	ANGELO LAVRANOS	<b>Top:</b>	Enclosed Pilothouse
<b>Deck Material:</b>	Teak and Fiberglass	<b>Engines:</b>	705 HP,Twin, 2013, Inboard, Diesel, CAT, C12, 820hrs / 820hrs
<b>Tonnage:</b>	40	<b>Staterooms:</b>	3
<b>Range At Cruise</b>	400	<b>Sleeps:</b>	6
<b>Speed:</b>		<b>Heads:</b>	4
<b>Range At Max</b>	300	<b>Crew Quarters:</b>	1
<b>Speed:</b>		<b>Crew Berths:</b>	2
<b>Speed:</b>	Cruising 20 Knots (23 MPH) Max 22 Knots (25 MPH)	<b>Captain Cabin:</b>	Yes
<b>Int Designer:</b>	LEIGH FORD	<b>Classifications:</b>	
<b>Ext Designer:</b>	JC ESPINOSA	<b>MCA: ISM:</b>	
<b>Fuel Capacity:</b>	1,000.00 Gal (3,785.41 L)		
<b>Water Capacity:</b>	300.00 Gal (1,135.62 L)		
<b>Holding Tank:</b>	120.00 Gal (454.25 L)		
<b>Flag:</b>	United States		
<b>Location:</b>	FT LAUDERDALE, Florida United States		
<b>Price:</b>	\$2,495,000 USD		
<b>Tax Status:</b>	US Duty Paid		

## **Overview**

### **Main Structure**

One-piece hull lamination, longitudinal stringers and keel to protect propellers and rudders

Solid fiberglass below waterline

High-density Divinycell or equivalent foam cored construction above water line

Entire hull structure constructed under high vacuum pressure utilizing the patented SCRIMPTM process for higher strength and reduced weight

High-density Divinycell or equivalent foam cored deck and superstructure.

Entire deck and superstructure constructed under high vacuum pressure utilizing the patented SCRIMPTM process for higher strength and reduced weight.

White gelcoat finish for hull above water line, exterior decks and furniture

International® 3 ply anti-fouling bottom paint, and 5 plies anti-osmosis primer treatment.

PropSpeed metal paint for underwater appendages

Horizon Yachts style liners and modules with light weight cored wood cabinetry

### **Hull and Deck Exterior General**

Gunwale with external rub rail

Fiberglass cap rail

Mooring cleats, with hawse pipes in gunwale

Locker for 24V anchor windlass with foot switches

Anchor controls at anchor locker and Skylounge with Chain Counter

Roller and stainless chain stopper for anchor

Stainless steel safety rails

Stainless steel flag pole on stern

Deck hatch for access to 63kg Delta anchor 175 ft of high tensile 3/8" chain plus 100ft rode

Fresh water at chain anchor

Two bow storage lockers with access through flush deck hatches

Large deck storage hatch

6 opening portlights

Two hull side frameless and flush mounted windows. Oval tinted and tempered glass

2 x Deck hatches with blinds & screens

Stainless steel framed salon door with 8' opening

2 x side boarding door.

Non-skid deck

After deck engine control station for engines and Bow Thruster.

Self draining Teak aft deck

FRP Curved seat with cushions

Large solid wood cockpit table for 8

Two large curved steps down to large dive/swim platforms

Manual swim ladder (1)

Cockpit lockers for storage

Cockpit down lights

Courtesy lights

Hot and cold fresh water shower recessed into aft coaming (2)

Fresh water tap for deck wash

Canvas covers for exterior furniture

Comfortable curved stairway with teak treads up to flybridge from aft deck

Recessed fuel and water inlets

Aft Awning

Bow Cushions

### **Skylounge**

Instrument consul with engine controls,

Generated On 4/1/2020 6:12:13 PM by Richard Ford

Proud Member of 

---

**The Powercat Company LLC**

**2525 Marina Bay Drive West**

**Suite 202**

**Ft Lauderdale Florida**

**33312 United States**

**Richard Ford**

**P: 9548038102**

**M: 954 803 8102**

**richard@powercatco.com**

**www.horizonpowercatamarans.com**

**First A Fence**

2 x Garmin 8215 chart plotters  
72 Mile HD Radar  
Auto pilot  
Depth and speed transducers  
Garmin VHF  
Instrument monitors and panels, fuel tank monitoring system  
Triple Windscreen Washers and Wipers  
Side opening wing doors in Glass  
Windlass remote control  
Remote controls for spot light and ship's horn  
Bilge pump monitors and controls  
5" Compass, Spot light and Horn  
Comfortable stairs for access to aft deck with stainless handrails  
Yacht Controller for Engines, Bow Thruster and Windlass  
ES 1000 Hydraulic crane for tender on flybridge  
DVD stereo system with marine speakers  
Yacht Controller  
Ghost Security System  
Garmin AIS 600  
KVH HD7 TV  
Cradlepoint Cell Internet  
Wave Wi-Fi  
Navigation lights  
Ample locker space for storage  
Desk with Storage Drawers and lockers  
Hi-Lo table with ample seating  
Day head with Shower  
Dometic fridge  
Indirect lighting under counter  
Luxurious lounging seating.  
Blinds and  
Helm station with stainless wheel  
Stidd helm chair (2)  
V-Kool on all Windows


### **Engine Propulsion & Steering System**

Twin CAT C-12 705HP engines  
Dual Racor filters in each engine room  
Stainless shafts with 4 blade propellers  
Bronze P bracket  
Shaft and rudder packing glands with maintenance free Tides seals  
Stainless rudder with zinc plates  
Power Steering system  
Side Power Bow Thruster

### **Engine Room and Equipment**

Sound and heat insulated compartments  
Ventilation system with moisture eliminators  
21.5Kw(60Hz) Onan generator with sound shield and air water separator (3900 HRS)  
21.5Kw Onan Night Generator with sound shield New 2016 (2885 HOURS)  
Engine access through deck hatches in cockpit floor  
DC Lights  
Automatic fire extinguishers  
Outlets  
High water bilge pumps with alarms

Generated On 4/1/2020 6:12:13 PM by Richard Ford

Proud Member of 

**The Powercat Company LLC**  
**2525 Marina Bay Drive West**  
**Suite 202**  
**Ft Lauderdale Florida**  
**33312 United States**

**Richard Ford**  
**P: 9548038102**  
**M: 954 803 8102**  
**richard@powercatco.com**  
**www.horizonpowercatamarans.com**

**First A Fence**

Oil change pump system for engines and generator  
Bluewater 1500 Gal/day Watermaker with remote  
Glendenning Shore system  
100Amp Charles Isoboost

Portable fire extinguishers  
Fuel transfer pumps  
4x 3 ton Chilled water air conditioning compressors and circulation pump  
AC and DC distribution panels  
High volume AC fresh water pump  
High Volume DC fresh water pump  
Electrical outlets and lights

### **Electrical system**

110V or 220V electrical supply from dual generators/ shore power  
TV / Telephone dock inlets  
Shore power connector  
Selector switch for AC power supply  
Color-coded wiring for easy identification  
Premium DC distribution board with switches, voltmeter and amp meter  
Remote panel for generator  
DC24V 450 Amp/Hr AGM Batteries  
Premium AC panel with switches 110/ 220VAC  
Fresh, black water & diesel tank gauges  
Engine start batteries  
Charger / Inverter 4000W(1)  
Vimar switches for lighting switches and receptacles  
Outlets in Salon / bar / galley / cabins /fly-bridge / aft deck / engine room

### **Plumbing System**

Techma Electric fresh water flush toilets  
Washer and separate dryer including laundry cabinets and iron board  
40 Gal holding tanks (2), Y valve for automatic discharge or dock side pump out  
300 Gal Water tanks  
Water and black tank integral to hull  
Color coded piping for easy identification  
High water bilge alarm  
6x electric 24V bilge pumps  
Marine grade lines for fresh water system  
Fresh water tank monitoring system  
110V 20 Gal hot water heater

### **Interior Layout - Salon**

Main wood is Anegre  
Washed Teak hardwood flooring  
Tempered safety glass windows  
2 luxurious salon sofa's covered in leatherette  
Soft furnishings including roman blinds and solid luxury custom cabinetry  
Fabric headliner with recessed down lights  
Window valance  
Side tables with storage  
Ottoman which converts to dining table  
42" flat screen TV with Sonos surround sound, and Blu-ray DVD

## On Deck Master Stateroom

Carpeted flooring  
Soft furnishings including blinds on all windows  
Luxurious custom carpentry  
King size walk around bed  
Reading lights and cabin lights  
Night stands with cupboard, light switches and outlets  
Headliner with recessed down lights  
Bedside settee  
Large closets for linens / towels and clothes  
180deg views through wrap around, tinted and tempered windows  
Sound insulated bulkheads  
32" Flat TV with hi-Lo system and DVD stereo.

## Master Stateroom – En-suite Bathroom

Vanity with stool and mirror with large oval window  
Blind over large window  
Large twin basins, cabinets and mirrors  
Luxury walk-in separate shower  
Separate toilet with basin and cabinets  
Large dressing area with full height closets - cedar lined  
Luxurious custom carpentry

## VIP Cabin

Queen size bed – semi walk around  
Carpeted flooring  
Soft furnishings including roman blind over large oval window  
Luxurious custom carpentry  
Luxury mattress  
Reading lights, cabin lights  
Opening hatch above bed  
Night stands with cupboard, light switches and outlets  
Vanity with mirror and stool  
Closets cedar lined  
Fabric headliner with recessed down lights  
En-suite bathroom with walk-in shower, head and basin  
Opening port-lights for natural light and ventilation  
22" TV with DirecTV receiver  
Fusion Stereo with DVD

## Guest Cabin

Twin beds convertible to king.  
Carpeted flooring  
Soft furnishings including roman blind over port lights  
Luxurious custom carpentry  
Luxury mattress  
Reading lights, cabin lights  
Opening port lights in hull side  
Night stand with drawers, light switches and outlets  
Fabric headliner with recessed down lights  
En-suite bathroom doubles as day head with walk-in shower, head and basin  
Opening port-lights for natural light and ventilation  
22"TV with DirecTV decoder

Generated On 4/1/2020 6:12:13 PM by Richard Ford

Proud Member of 

---

**The Powercat Company LLC**

**2525 Marina Bay Drive West**

**Suite 202**

**Ft Lauderdale Florida**

**33312 United States**

**Richard Ford**

**P: 9548038102**

**M: 954 803 8102**

**richard@powercatco.com**

**www.horizonpowercatamarans.com**

**First A Fence**

Page 6 of 22

## Galley

Caropree counter tops and splash backs  
Custom luxury cabinetry  
4 burner cook top - electric  
Avantium Oven and Microwave  
GE - Dish washer  
Sub Zero stainless steel refrigerator with twin freezer drawers & Icemaker  
GE Wine Cooler  
Cutlery & crockery drawers  
Pot drawer & spice cupboard  
Additional storage drawers and cupboards  
Double sinks with garbage disposal  
Under counter trash drawer  
Luxurious custom carpentry



## SALON



## SALON





## SALON



## GALLEY



## GALLEY



## SALON/GALLEY



## MASTER STATEROOM

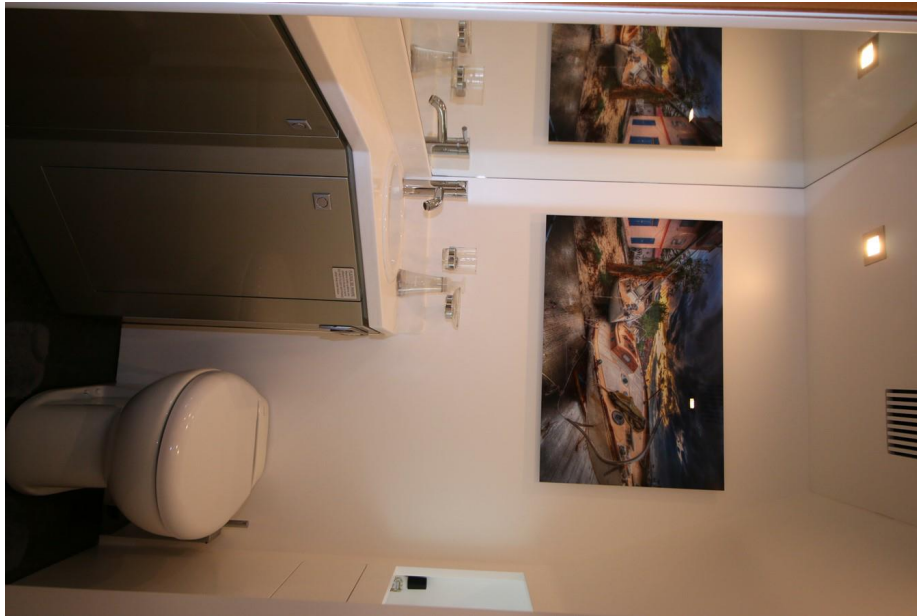


## MASTER SHOWER





## MASTER HEAD



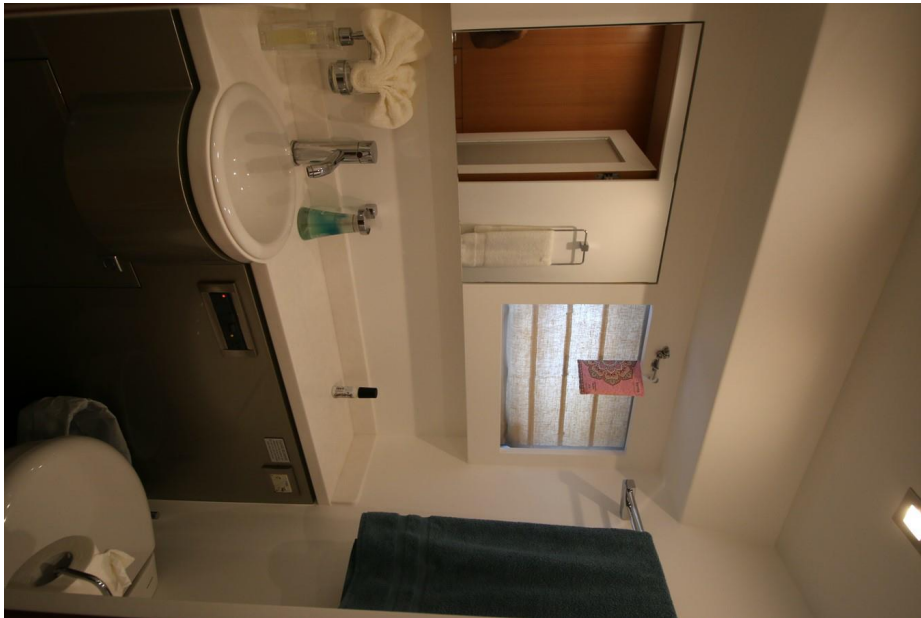
## VIP STATEROOM



## VIP STATEROOM



## VIP HEAD



## GUEST STATEROOM



## GUEST STATEROOM





## GUEST HEAD



## CREW STATEROOM



## ENCLOSED BRIDGE



## ENBLOSED BRIDGE



## ENCLOSED BRIDGE HELM



## ENGINE HOURS





### ENCLOSED BRIDGE DAY HEAD



### ENCLOSED BRIDGE ENTERTAINMENT AREA



## ENCLOSED BRIDGE SETTE



## AFT DECK



## AFT DECK



## FLY BRIDGE ACCESS





## AFT DECK CONTROLS



## AFT DECK BAR



## STARBOARD ENGINE ACCESS



## PORT ENGINE ACCESS

